

**Pink Hope Community Limited**

43 159 082 792



# **Pink Hope Community Limited**

43 159 082 792

## **Financial Statements**

**For the Year Ended 30 June 2014**

# **Pink Hope Community Limited**

43 159 082 792

## **Contents**

**For the Year Ended 30 June 2014**

	<b>Page</b>
<b>Financial Statements</b>	
Chief Executive Officer's Report	3
Directors' Report	4
Statement of Profit or Loss and Other Comprehensive Income	7
Statement of Financial Position	8
Statement of Changes in Equity	9
Statement of Cash Flows	10
Notes to the Financial Statements	11
Directors' Declaration	19
Independent Audit Report	20

## **Chief Executive Officer's Report**

**30 June 2014**

### *Pink Hope*

*Pink Hope* is an Australian DGR charity that empowers women and their families to take control of their hereditary breast and ovarian health through education, prevention and support. Our primary goal is to ensure that this generations high-risk families do not become the next generations cancer sufferers.

#### ***Pink Hope's* Mission and Objectives:**

- Empower and encourage all women to be proactive and vigilant with their hereditary breast and ovarian health – by understanding and assessing their own personal risk
- Provide a safe haven of information and support to the high risk community to help manage and navigate their risk
- Advocate for the high risk community and instigate discussions relevant to high risk families
- Give each high risk individual the tools and resources to be in charge of their health and discuss their options with healthcare professionals

*Pink Hope* was established as a charity in 2012, operating from NSW, and has rapidly become the premier hereditary health prevention charity – supporting thousands of high-risk families around the country and enabling the general population to understand their own risks.

Carrying a genetic predisposition to breast and ovarian cancer can have far-reaching medical, social, emotional, financial and physical implications for women and their families. In addition, these cancers often occur at much younger ages, making the gravity of the situation even more confronting.

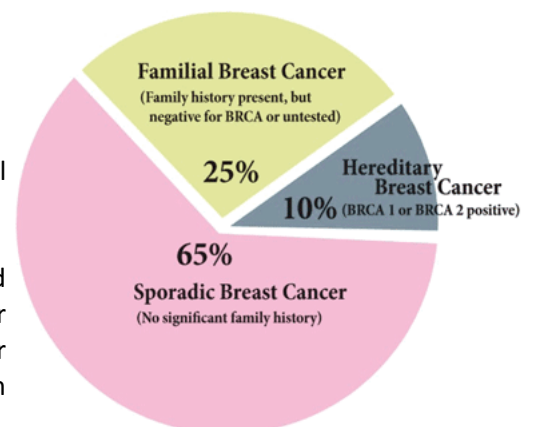
### *Who does Pink Hope support?*

Pink Hope supports families facing hereditary breast and ovarian cancer.

This includes;

- Women and men who are BRCA gene fault positive
- Women who have returned an inconclusive result from a gene test
- Other gene fault carriers like PTEN, ATM, Lynch Syndrome etc
- Family members supporting the high risk individual & the general population who wish to assess their risk

An estimated **240,000** Australians are at risk of hereditary breast and ovarian cancer. Breast cancer is the most commonly diagnosed cancer among women in Australia, where one in nine will be diagnosed in their lifetime. Due to an aging Australian population, the number of women diagnosed with breast cancer is expected to increase.



By 2015, the number of new breast cancer cases among women is projected to be over 15,000 (AIHW 2009). Current literature estimates that 5-10% of all breast cancers are due to inherited faults (NBOCC 2010, Cancer Institute NSW 2010).

The Pink Hope website currently receives more than **540,000** hits per month, with an average session time of 10 minutes. Our resources are downloaded **25,000** times per month. **85%** of visitors come direct to pinkhope.org.au. Our social media reach is over **60,000** engaged followers and growing daily, with **69 million** impressions recorded over 3 years.

*"I want to encourage every woman, especially if you have a family history of breast or ovarian cancer, to seek out the information and medical experts who can help you through this aspect of your life, and to make your own informed choices."*

– Angelina Jolie, Celebrity and BRCA 1 Gene positive



## Where does *Pink Hope* provide support?

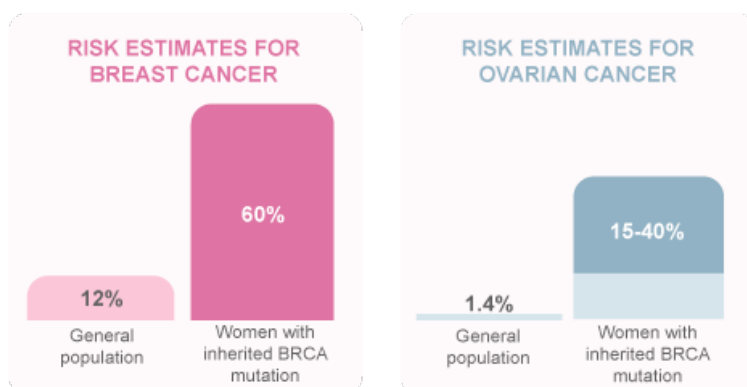
Pink Hope is national in scope, operating from NSW it represents a central point of contact for all individuals at high-risk of breast and ovarian cancer regardless of whether they live in rural, regional or metropolitan Australia. In order to reach all types of individuals, the organisation aims to provide clear, accurate and up-to-date information on genetic testing, risk management strategies, and health and wellbeing issues.

Information and support can be sourced online, through localised groups and networks, state specific programs, and events. ***Pink Hope* have a basic head office in NSW**, and while a number of requests to establish offices in other states have been received, the charity founder and established networks are committed to establishing a fully operational Head Office and Health preventative hub, to continue their work with strong foundations from a NSW base.

In the past 12 months Pink Hope has generated over **9,000** pieces of media; this has resulted in Pink Hope having the highest amount of traditional and social media coverage for any charity in Australia during that period. **300 Million** impressions have been generated across TV, print, radio and online nationally and internationally, with 100% positive feedback.

## What does *Pink Hope* provide?

Pink Hope was established in response to an existing gap in the provision of accredited information, relevant guidance and emotional support for high-risk hereditary breast and ovarian women living in Australia. Pink Hope has developed programs and support services to assist high risk families at each touch point of the journey. Each month up to **25,000** documents are downloaded from the *Pink Hope* website.



## THE MAIN FUNCTIONS AND ACTIVITIES OF PINK HOPE ARE:

- reduce the incidence of preventable morbidity from hereditary breast and ovarian cancer by increasing **community awareness** and providing **targeted information** to those within the Australian community living with a strong family history of these cancers;
- support best practice and **strengthen existing services** for the high-risk community by forging strong collaborations with healthcare professionals and key healthcare organisations (e.g The Kathleen Cunningham Foundation Consortium for Research into Familial Aspects of Breast Cancer [kConFab], Familial Cancer Clinics, Breast Cancer Network Australia, Peter Mac Cancer Centre, McGrath Foundation, Ovarian Cancer Australia and Cancer Australia);
- maximise the wellbeing and quality of life of women at high risk of breast and ovarian cancer by offering **safe, accessible, education and emotional support**, to at-risk women during their individual journey;

*"Through our affiliation with Krystal we worked with numerous Pink Hope National ambassadors. These ambassadors showcased the positivity Pink Hope has brought into their life and they are testimony to this important work Krystal is doing in our community."*

– Cancer Australia



## PINK HOPE PROGRAMS INCLUDE;

- **Kiss and Tell** - providing tools and resources to investigate family health history
- **Glimmer of Hope** - giving hope to families facing hereditary cancer
- Family Cancer Clinic, **Pink Hope Pack** – a resource kit for high risk families which support and inform at each touch point of the journey
- **Genetic Counsellor** – when questions cannot be answered on our website, or help and tips are needed to investigate family health history. A genetic counsellor is available to assist.
- **Outreach Ambassador Program** - trained ambassadors support other families facing hereditary breast and ovarian cancer
- **Online Support Groups**- Pink Hope monitors and connects high risk women around the country through our online support groups.
- **Ambassador rewards** - support days and yearly Conferences, Member of the Month
- **Personal Stories** – learning through other personal stories is often therapeutic and makes women feel a little less alone.
- **Peer to peer support** – connecting with others in similar situations
- **Rural Skype sessions** - Online video sessions with a genetic counsellor or case navigator

## PINK HOPE SUPPORT RESOURCES INCLUDE;

- **Question Tool Kits** - preparation for every healthcare appointment through the high risk journey. From genetic counsellor to the plastic surgeon.
- **The Man Cave** - easy to download and share resources for men. From investigating their health history, making decisions regarding genetic testing and giving tips for men to support their partner
- **Kits and Tips** – My Journey Kits provide documents you can download and share at each key touch point of your journey. From cancer diagnosis, genetic testing and risk factors for breast and ovarian cancer.
- **Feel Your Boobies and Know Your O's** - help to engage women to know what to look for, how to screen themselves and what risk factors they should consider when implementing their health strategies.
- **Educational Videos** – informative and relevant videos of interest
- **Jewish Community Resources** - unique resources for the Ashkenazi Jewish community who is at heightened risk of breast and ovarian cancer.
- **News and Research** - up to date news with everything happening in the cancer medical community.

# Pink Hope Community Limited

43 159 082 792

## Directors' Report

30 June 2014

The directors present their report on Pink Hope Community Limited for the financial year ended 30 June 2014.

### 1. General information

#### Information on directors

The names of each person who has been a director during the year and to the date of this report are:

Mark Barter	
Qualifications	Qualified Engineer, Member of the Australian Institute of Company Directors and of the International Association of Elevator Engineers.
Experience	Business executive with over 35 years as both CEO and Managing Director of multinational companies.
Special responsibilities	Chairman of the Board
Krystal Barter	
Qualifications	Founder of Pink Hope Community Limited.
Experience	Philanthropist, Author and Activist.
Special responsibilities	Chief Executive Office and Company Secretary
Jason Tien-Kin Li	
Qualifications	Graduate Diploma in Military Law, Master of Laws, Bachelor of Business (Accounting)
Experience	Practicing Solicitor
Special responsibilities	Governance and compliance
Ian Jones	
Qualifications	B. Ed (Maths), MBA (MGSB and Harvard Business School)
Experience	Head of marketing of a large corporation
Rebecca Molinaro	
Experience	Office administration and bookkeeper for a small to medium sized business

Directors have been in office since the start of the financial year to the date of this report unless otherwise stated.

#### Principal activities

The principal activity of Pink Hope Community Limited during the financial year was is to raise the awareness and inspire women to be proactive and vigilant with their breast and ovarian health through education, prevention and support.

No significant changes in the nature of the Organisation's activity occurred during the financial year.

#### Short term objectives

The Company's short-term objectives are to:

- Inspire and encourage all women to be proactive and vigilant with their breast and ovarian health.
- Provide a safe haven of information and support to the high-risk community.

## **Directors' Report**

**30 June 2014**

### **Short term objectives continued**

- Advocate for the high risk community and initiate discussions relevant to high risk families.
- Give each high-risk individual the tools and resources to be in charge of their health and discuss their options with healthcare professionals.
- Ensure those at high risk are able to make informed decisions about their health and are supported throughout their journey.

### **Long term objectives**

The Company's long-term objectives are to:

- To reduce the occurrence of hereditary breast and ovarian cancer amongst the known high-risk population through awareness, education and support.
- Change the way high-risk families gain the support and resources they need outside of the healthcare environment.
- Change the future of high-risk families in Australia.
- Create a global alliance with other similar charities around the world to share resources.

### **Strategy for achieving the objectives**

To achieve these objectives, the Company has adopted the following strategies:

- Run campaigns and programs to increase public awareness of hereditary breast and ovarian cancer.
- Provide education materials and related resources for increased public awareness.
- Raise the profile of hereditary cancer in women

### **Members guarantee**

Pink Hope Community Limited is a company limited by guarantee. In the event of, and for the purpose of winding up of the company, the amount capable of being called up from each member and any person or association who ceased to be a member in the year prior to the winding up, is limited to \$ 10 for non-corporate members, subject to the provisions of the company's constitution.

At 30 June 2014 the collective liability of members was \$50 (2013: \$50).

## **2. Operating results and review of operations for the year**

### **Operating results**

The profit of the Organisation after providing for income tax amounted to \$ 96,348 (2013: \$ 103,684).

## **3. Other items**

### **Significant changes in state of affairs**

There have been no significant changes in the state of affairs of the Organisation during the year.

### **Matters or circumstances arising after the end of the year**

No matters or circumstances have arisen since the end of the financial year which significantly affected or could significantly affect the operations of the Organisation, the results of those operations or the state of affairs of the Company in future financial years.

**Pink Hope Community Limited**

43 159 082 792

**Directors' Report**

**30 June 2014**

**Meetings of directors**

During the financial year, 2 meetings of directors (including committees of directors) were held. Attendances by each director during the year were as follows:

	<b>Directors' Meetings</b>	
	<b>Number eligible to attend</b>	<b>Number attended</b>
Mark Barter	2	2
Krystal Barter	2	2
Jason Tien-Kin Li	2	2
Ian Jones	2	2
Rebecca Molinaro	2	2

Signed in accordance with a resolution of the Board of Directors:

Director:



Krystal Barter

Dated 29<sup>th</sup> January 2015



## Pink Hope Community Limited

43 159 082 792

### Statement of Profit or Loss and Other Comprehensive Income For the Year Ended 30 June 2014

		2014	2013
	Note	\$	\$
Revenue	9	310,032	217,064
Other income		2,172	-
Raw materials and consumables used		(26,755)	(7,649)
Employee benefits expense		(78,874)	(52,955)
Depreciation and amortisation expense		(1,391)	(1,033)
Other expenses		(107,877)	(50,212)
Finance costs		(960)	(1,531)
<b>Surplus before income tax</b>		<b>96,348</b>	103,684
Income tax expense		-	-
<b>Net surplus and total comprehensive income for the year</b>		<b>96,348</b>	103,684

The accompanying notes form part of these financial statements.

**Pink Hope Community Limited**

43 159 082 792

**Statement of Financial Position****30 June 2014**

	<b>Note</b>	<b>2014</b>	<b>2013</b>
		<b>\$</b>	<b>\$</b>
<b>ASSETS</b>			
CURRENT ASSETS			
Cash and cash equivalents	2	<b>191,476</b>	106,151
Trade and other receivables	3	<b>5,037</b>	-
Inventories		<b>18,750</b>	-
TOTAL CURRENT ASSETS		<b>215,263</b>	106,151
NON-CURRENT ASSETS			
Property, plant and equipment	4	<b>1,424</b>	1,401
Intangible assets	5	<b>3,423</b>	4,237
TOTAL NON-CURRENT ASSETS		<b>4,847</b>	5,638
TOTAL ASSETS		<b>220,110</b>	111,789
<b>LIABILITIES</b>			
CURRENT LIABILITIES			
Trade and other payables	6	<b>20,444</b>	8,129
Current tax liabilities		<b>(366)</b>	(24)
TOTAL CURRENT LIABILITIES		<b>20,078</b>	8,105
NON-CURRENT LIABILITIES			
TOTAL LIABILITIES		<b>20,078</b>	8,105
NET ASSETS		<b>200,032</b>	103,684
<b>EQUITY</b>			
Retained earnings		<b>200,032</b>	103,684
TOTAL EQUITY		<b>200,032</b>	103,684

The accompanying notes form part of these financial statements.

**Pink Hope Community Limited**

43 159 082 792

**Statement of Changes in Equity**

**For the Year Ended 30 June 2014**

**2014**

	<b>Retained Earnings</b>	<b>Total</b>
<b>Note</b>	<b>\$</b>	<b>\$</b>
<b>Balance at 1 July 2013</b>	<b>103,684</b>	<b>103,684</b>
Surplus attributable to members	<b>96,348</b>	<b>96,348</b>
<b>Balance at 30 June 2014</b>	<b>200,032</b>	<b>200,032</b>

**2013**

	<b>Retained Earnings</b>	<b>Total</b>
<b>Note</b>	<b>\$</b>	<b>\$</b>
<b>Balance at 20 June 2012</b>	-	-
Surplus attributable to members	<b>103,684</b>	<b>103,684</b>
<b>Balance at 30 June 2013</b>	<b>103,684</b>	<b>103,684</b>

The accompanying notes form part of these financial statements.

**Pink Hope Community Limited**

43 159 082 792

**Statement of Cash Flows**  
**For the Year Ended 30 June 2014**

	<b>2014</b>	<b>2013</b>
<b>Note</b>	<b>\$</b>	<b>\$</b>
<b>CASH FLOWS FROM OPERATING ACTIVITIES:</b>		
Receipts from sales of merchandise	<b>91,765</b>	11,569
Donations received	<b>156,025</b>	129,111
Sponsorships received	<b>43,091</b>	58,170
Payments to suppliers and employees	<b>(204,956)</b>	<b>(86,027)</b>
Net cash provided by (used in) operating activities	<b>85,925</b>	<b>112,823</b>
8		
<b>CASH FLOWS FROM INVESTING ACTIVITIES:</b>		
Purchase of property, plant and equipment	-	(2,300)
Payment to acquire intangible assets	-	(4,372)
Net cash used by investing activities	<b>-</b>	<b>(6,672)</b>
<b>CASH FLOWS FROM FINANCING ACTIVITIES:</b>		
Net increase (decrease) in cash and cash equivalents held	<b>85,925</b>	106,151
Cash and cash equivalents at beginning of year	<b>106,151</b>	-
Cash and cash equivalents at end of financial year	<b>192,076</b>	<b>106,151</b>
2		

The accompanying notes form part of these financial statements.

## Pink Hope Community Limited

43 159 082 792

# Notes to the Financial Statements

## For the Year Ended 30 June 2014

The financial statements are for Pink Hope Community Limited as an individual entity, incorporated and domiciled in Australia. Pink Hope Community Limited is a not-for-profit Company limited by guarantee..

The functional and presentation currency of Pink Hope Community Limited is Australian dollars.

### (a) Basis of Preparation

The financial statements are general purpose financial statements that have been prepared in accordance with Australian Accounting Standards - Reduced Disclosure Requirements, the *Australian Charities and not-for-profits Commission Regulations 2013* and the *Charitable Fundraising (NSW) Act 1991*.

Material accounting policies adopted in the preparation of these financial statements are presented below and have been consistently applied unless otherwise stated.

The financial statements have been prepared on an accruals basis and are based on historical costs unless otherwise stated.

### (b) Comparative Amounts

Comparatives are consistent with prior years, unless otherwise stated.

### (c) Income Tax

No provision for income tax has been raised as the Company is exempt from income tax under Div 50 of the Income Tax Assessment Act 1997.

### (d) Revenue and other income

Revenue consist of donations from the general public, functions & fundraising events and sponsorship from benefactors. It is recognised when the amount of the revenue is received (for donations and functions & fundraising ) or when it can be measured reliably and when it is probable that economic benefits associated with the transaction will flow to the entity (for sponsorships).

All revenue is stated net of the amount of goods and services tax (GST).

#### Sale of goods

Revenue is recognised on transfer of goods to the customer as this is deemed to be the point in time when risks and rewards are transferred and there is no longer any ownership or effective control over the goods.

### (e) Goods and Services Tax (GST)

Revenue, expenses and assets are recognised net of the amount of goods and services tax (GST), except where the amount of GST incurred is not recoverable from the Australian Taxation Office (ATO).

Receivables and payable are stated inclusive of GST.

The net amount of GST recoverable from, or payable to, the ATO is included as part of receivables or payables in the statement of financial position.

Cash flows in the statement of cash flows are included on a gross basis and the GST component of cash flows arising from investing and financing activities which is recoverable from, or payable to, the taxation authority is classified as operating cash flows.

## **Notes to the Financial Statements**

**For the Year Ended 30 June 2014**

(f) Property, Plant and Equipment

Property, plant and equipment are measured using the cost model.

Where the cost model is used, the asset is carried at its cost less any accumulated depreciation and any impairment losses. Costs include purchase price, other directly attributable costs and the initial estimate of the costs of dismantling and restoring the asset, where applicable.

Depreciation

The depreciable amount of all property, plant and equipment is depreciated on a straight-line method from the date that management determine that the asset is available for use.

The depreciation rates used for each class of depreciable asset are shown below:

<b>Fixed asset class</b>	<b>Depreciation rate</b>
Office Equipment	25%
Computer Software	20%

At the end of each annual reporting period, the depreciation method, useful life and residual value of each asset is reviewed. Any revisions are accounted for prospectively as a change in estimate.

(g) Intangible Assets

Patents and trademarks

Patents and trademarks are recognised at cost of acquisition. Patents and trademarks have a finite life and are carried at cost less any accumulated amortisation and any impairment losses. Patents and trademarks are amortised on a straight-line basis over their useful life ranging from 8 to 10 years.

(h) Cash and cash equivalents

Cash and cash equivalents comprises cash on hand, demand deposits and short-term investments which are readily convertible to known amounts of cash and which are subject to an insignificant risk of change in value.

Bank overdrafts also form part of cash equivalents for the purpose of the statement of cash flows and are presented within current liabilities on the statement of financial position.

## Pink Hope Community Limited

43 159 082 792

### Notes to the Financial Statements

For the Year Ended 30 June 2014

2	Cash and cash equivalents		
		<b>2014</b>	<b>2013</b>
		<b>\$</b>	<b>\$</b>
	<b>Cash at bank and in hand</b>	<b>191,476</b>	<b>106,151</b>
		<hr/>	<hr/>
	Reconciliation of cash		
	Cash and Cash equivalents reported in the statement of cash flows are reconciled to the equivalent items in the statement of financial position as follows:		
	Cash and cash equivalents	<b>191,476</b>	<b>106,151</b>
		<hr/>	<hr/>
3	Trade and other receivables		
	CURRENT		
	Trade receivables	<b>5,037</b>	-
	The carrying value of trade receivables is considered a reasonable approximation of fair value due to the short-term nature of the balances.		
4	Property, plant and equipment		
	PLANT AND EQUIPMENT		
	Office equipment		
	At cost	<b>1,250</b>	1,250
	Accumulated depreciation	<b>(438)</b>	(188)
	Total office equipment	<b>812</b>	1,062
	Computer software		
	At cost	<b>1,050</b>	1,050
	Accumulated depreciation	<b>(438)</b>	(711)
	Total computer software	<b>612</b>	339
	<b>Total property, plant and equipment</b>	<b>1,424</b>	1,401
		<hr/>	<hr/>
5	Intangible Assets		
	Trademarks		
	Cost	<b>4,972</b>	4,372
	Accumulated amortisation and impairment	<b>(1,549)</b>	(135)
	<b>Total Intangibles</b>	<b>3,423</b>	4,237
		<hr/>	<hr/>

## Pink Hope Community Limited

43 159 082 792

### Notes to the Financial Statements

For the Year Ended 30 June 2014

#### 6 Trade and other payables

	2014	2013
	\$	\$
CURRENT		
Unsecured liabilities		
Trade payables	-	2,009
Sundry payables and accrued expenses	<u>20,445</u>	<u>6,120</u>
Total trade and other payables	<u><u>20,444</u></u>	<u><u>8,129</u></u>

#### 7 Key Management Personnel Disclosures

The total remuneration paid to key management personnel of the Company is \$ 65,850 (2013: \$51,977).

#### 8 Cash Flow Information

##### (a) Reconciliation of result for the year to cashflows from operating activities

Reconciliation of net income to net cash provided by operating activities:

Profit for the year	96,348	103,684
Cash flows excluded from profit attributable to operating activities		
Non-cash flows in profit:		
- amortisation	878	363
- depreciation	513	670
Changes in assets and liabilities, net of the effects of purchase and disposal of subsidiaries:		
- (increase)/decrease in trade and other receivables	(5,037)	-
- (increase)/decrease in inventories	(18,750)	-
- increase/(decrease) in trade and other payables	<u>11,973</u>	<u>8,106</u>
Cashflow from operations	<u><u>85,925</u></u>	<u><u>112,823</u></u>



## Pink Hope Community Limited

43 159 082 792

### Notes to the Financial Statements For the Year Ended 30 June 2014

#### 9 Revenue and Other Income

Revenue from continuing operations

	2014	2013
	\$	\$
Sales revenue		
- sale of goods	11,754	18,213
- provision of services	750	-
	<u>12,504</u>	<u>18,213</u>
Other revenue		
- grants	3,010	-
- donations	156,025	129,111
- functions & fundraising	92,097	11,570
- sponsorships	43,091	58,170
- subscriptions	3,305	-
	<u>297,528</u>	<u>198,851</u>
<b>Total Revenue</b>	<u><b>310,032</b></u>	<u><b>217,064</b></u>

#### 10 Result for the Year

The result for the year includes the following specific expenses:

<b>Other expenses:</b>		
Salaries and wages	68,240	45,541
Superannuation contributions	6,189	3,081
Other employee benefits	4,445	4,333

## Pink Hope Community Limited

43 159 082 792

### Notes to the Financial Statements

For the Year Ended 30 June 2014

11 Information and Declaration to be furnished under the Charitable Fundraising Act 1991

The Company is registered under the Charitable Fundraising Act 1991 to conduct public fundraising activities.

(a) Details of aggregated gross income and expenses of fundraising activities

	<b>2014</b>	<b>2013</b>
	<b>\$</b>	<b>\$</b>
Donations	<b>156,025</b>	128,905
Functions & Fundraising	<b>91,765</b>	11,570
Sponsorships	<b>43,091</b>	58,170
Sale of merchandise	<b>11,754</b>	18,213
<b>Total Income</b>	<b>302,635</b>	216,858
Programs, Support and Campaign expenses	<b>96,334</b>	56,150
Information, resources, website and merchandise expenses	<b>35,477</b>	23,382
Office, Administration & Wages	<b>69,574</b>	25,186
Program, Support & General Travel related expenses	<b>21,902</b>	6,393
Finance charges	<b>960</b>	1,531
Depreciation and amortisation	<b>1,335</b>	556
<b>Total Expense</b>	<b>225,582</b>	113,198

## Pink Hope Community Limited

43 159 082 792

# Notes to the Financial Statements

For the Year Ended 30 June 2014

### (b) Statement showing how funds were applied for charitable purposes

The Company applies its funds towards the maintenance of its Pink Hope website which provides information, support and various resources in raising awareness among women at risk in the community. Funds raised are used in maintaining the Company's website, expanding public awareness programs and towards the employment of hereditary specialist to support women (and their families) with hereditary breast and ovarian cancer.

### (c) Fundraising appeals conducted throughout the year

During the financial period ended 30 June 2014, there were numerous fundraising activities held on behalf of the Company by external and independent individuals acting as volunteers for the Company's missions and objectives, out of which there being 3 major fundraising events as follows:

- Bright Pink Lipstick Day - 26<sup>th</sup> Sept 14
- Pink Hope High Tea - 15<sup>th</sup> June 2014
- Run for Hope (Melbourne) - 2<sup>nd</sup> March 2014
- Run for Hope (Canberra) - 17<sup>th</sup> November 2013

In addition to the above direct fund raising activities, members of the public had also donated merchandise and various office equipment and office furniture to the Company for no consideration. The Directors have assessed that the fair value of the donated merchandise not taken into account and which are available for sale to the public are less than \$3,000 in total. The donated items of office equipment and furniture are second-hand goods with negligible net written down value.

### 12 Members' Guarantee

The Company is incorporated under the *Corporations Act 2001* and is a Company limited by guarantee. If the Company is wound up, the constitution states that each member is required to contribute a maximum of \$ - each towards meeting any outstanding's and obligations of the Company. At 30 June 2014 the number of members was - (2013: -).

### 13 Contingencies

In the opinion of the Directors, the Company did not have any contingencies at 30 June 2014 (30 June 2013:None).

### 14 Events Occurring After the Reporting Date

No matters or circumstances have arisen since the end of the financial year which significantly affected or may significantly affect the operations of the Company, the results of those operations, or the state of affairs of the Company in future financial years.

**Pink Hope Community Limited**

43 159 082 792

**Notes to the Financial Statements**

**For the Year Ended 30 June 2014**

15 Company Details

The registered office of and principal place of business of the company is:

Pink Hope Community Limited

Unit 1/228 Headland Rd,

North Manly NSW 2099

Telephone: 02 8084 2288

## Directors' Declaration

The directors of the Company declare that:

1. The financial statements and notes, as set out on pages 8 to 18, are in accordance with the Australian Charities and Not-for-Profit Commission Act 2012 and:
  - a. Comply with Australian Accounting Standards - Reduced Disclosure Requirements; and
  - b. Give a true and fair view of the financial position as at 30 June 2014 and of the performance for the year ended on that date of the Company.
2. In the directors' opinion, there are reasonable grounds to believe that the Company will be able to pay its debts as and when they become due and payable.

This declaration is made in accordance with a resolution of the Board of Directors.

Director

A handwritten signature in black ink that reads "Krystal Barter". The signature is written in a cursive, flowing style.

Krystal Barter

Dated  
29<sup>th</sup> January 2015